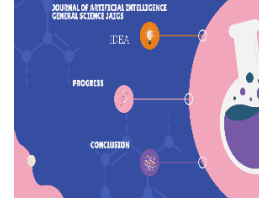




Vol. 1, Issue 1, January 2024
Journal of Artificial Intelligence General Science JAIGS

Home page <http://jaigs.org>



AI in Healthcare: Revolutionizing Patient Care with Predictive Analytics and Decision Support Systems

José Gabriel Carrasco Ramírez

Lawyer graduated at Universidad Católica Andrés Bello. Caracas. Venezuela. / CEO, Quarks Advantage. Jersey City, United States. / Director at Goya Foods Corp., S.A. Caracas. Venezuela

*Corresponding Author: José Gabriel Carrasco Ramírez Email: sohanasaba1994@gmail.com

ARTICLE INFO

Article History:

Received:

05.01.2024

Accepted:

10.01.2024

Online: 22.01.2024

Keyword: Artificial Intelligence (AI), Healthcare, Patient Care

ABSTRACT

This article explores the transformative impact of Artificial Intelligence (AI) in healthcare, with a specific focus on how predictive analytics and decision support systems are revolutionizing patient care. Predictive analytics enable early disease prevention and diagnosis by identifying patterns and risk factors, contributing to improved patient outcomes and cost-effective healthcare. Machine learning facilitates personalized treatment plans, leveraging individual patient data for tailored interventions that enhance efficacy and minimize adverse effects. AI-driven algorithms in medical imaging enhance diagnostic accuracy, providing rapid and precise assessments. Decision support systems, powered by AI, streamline healthcare workflows by offering real-time insights based on patient data and clinical guidelines, facilitating evidence-based decision-making. Remote patient monitoring, facilitated by AI, allows for proactive healthcare interventions by tracking vital signs and identifying potential health issues in real time. The article also discusses challenges and ethical considerations associated with AI integration in healthcare, emphasizing the importance of responsible deployment and regulatory frameworks. The comprehensive exploration underscores how AI is not only transforming patient care but also shaping the future of healthcare delivery.

Introduction:

Artificial Intelligence (AI) has emerged as a revolutionary force in healthcare, offering transformative solutions to enhance patient care, streamline processes, and improve overall healthcare outcomes.^[7] This article delves into the pivotal role of AI in healthcare, with a specific focus on how predictive analytics and decision support systems are reshaping patient care delivery.^[6]

Literature Review:

AI in healthcare is transforming patient care through predictive analytics and decision support systems. AI techniques, such as machine learning and deep learning, are being used to analyze structured and unstructured healthcare data, including electronic medical records and medical images^[1] ^[2]. These techniques can identify patterns and trends in patient data that may not be immediately apparent to humans, enabling earlier diagnosis, treatment, and prognosis evaluation^[3]. AI-powered chatbots and virtual assistants are also being used to automate routine tasks and provide personalized health advice, improving accessibility and patient engagement^[4]. Additionally, AI and machine learning algorithms are optimizing hospital operations, streamlining administrative tasks, and enhancing resource allocation^[5]. However, challenges such as data privacy, algorithmic biases, and the potential for AI to replace human judgment need to be addressed to ensure the safe and ethical use of AI in healthcare.

Objectives

1. Assess the current landscape of AI applications in healthcare, focusing on the integration of predictive analytics to anticipate patient outcomes and improve treatment planning.
2. Evaluate the efficacy of decision support systems powered by AI algorithms in enhancing clinical decision-making processes, optimizing resource allocation, and personalized patient care delivery.
3. Explore the potential impact of AI-driven solutions on healthcare outcomes, cost-effectiveness, and patient satisfaction, aiming to identify opportunities for further innovation and implementation in diverse healthcare settings.

Methodology:

1. Data Collection and Analysis: Collect data from various healthcare institutions and organizations implementing AI-driven predictive analytics and decision support systems. Analyze this data to identify trends, challenges, and success factors associated with the adoption and utilization of AI in healthcare settings.
2. Case Studies: Select relevant case studies showcasing the implementation of AI technologies in healthcare settings. These case studies will provide insights into real-world applications, outcomes, and best practices for integrating predictive analytics and decision support systems into patient care workflows.

3. **Expert Interviews:** Conduct interviews with healthcare professionals, AI researchers, and industry experts to gather qualitative insights into the benefits, limitations, and future prospects of AI in healthcare. These interviews will help validate findings from the literature review and provide additional perspectives on the topic.

4. **Quantitative Analysis:** Utilize quantitative methods to assess the impact of AI-driven predictive analytics and decision support systems on patient outcomes, healthcare resource utilization, and cost-effectiveness. This analysis may involve statistical modeling, data mining techniques, and performance metrics evaluation.

5. **Ethical Considerations:** Consider ethical implications associated with the use of AI in healthcare, including data privacy, bias mitigation, and patient consent. Evaluate existing frameworks and guidelines for ethical AI deployment in healthcare contexts, and discuss potential strategies for addressing ethical challenges.

6. **Future Outlook:** Based on the findings from the literature review, data analysis, case studies, and expert interviews, propose recommendations for future research directions and practical strategies for maximizing the potential of AI in revolutionizing patient care through predictive analytics and decision support systems.

Predictive Analytics in Disease Prevention and Early Diagnosis:

AI-driven predictive analytics play a crucial role in disease prevention and early diagnosis. By analyzing vast datasets, AI algorithms can identify patterns and risk factors, enabling healthcare professionals to predict the likelihood of diseases such as diabetes, cardiovascular conditions, and certain cancers. Early detection not only improves treatment outcomes but also reduces the overall cost of healthcare by minimizing the need for extensive and expensive interventions.

Personalized Treatment Plans with Machine Learning:

AI-driven machine learning models are revolutionizing treatment plans by providing personalized and targeted approaches. These models consider individual patient data, including genetics, medical history, and lifestyle factors, to recommend tailored treatment options. This personalized medicine approach enhances treatment efficacy, reduces adverse effects, and improves patient adherence to prescribed therapies.

Enhancing Diagnostic Accuracy with Imaging AI:

In medical imaging, AI algorithms are enhancing diagnostic accuracy and efficiency. Machine learning models trained on vast datasets can analyze medical images, such as X-rays, MRIs, and CT scans, to detect anomalies and provide rapid, accurate diagnoses. This not only expedites the diagnostic process but also supports healthcare professionals in making more informed decisions about patient care.

Streamlining Workflows with Decision Support Systems:

Decision support systems powered by AI are streamlining healthcare workflows by providing real-time insights and recommendations to healthcare professionals. These systems analyze patient data, clinical guidelines, and relevant research to assist in diagnosis and treatment planning. This support aids healthcare providers in making evidence-based decisions, ultimately improving the quality of care delivered.

Remote Patient Monitoring and Proactive Healthcare:

AI facilitates remote patient monitoring, allowing healthcare providers to track patients' vital signs and health metrics in real-time. Predictive analytics enable the identification of potential health issues before they escalate, allowing for proactive interventions. This not only enhances patient safety but also reduces hospital readmissions and healthcare costs.

Challenges and Ethical Considerations:

Despite the promising advancements, the integration of AI in healthcare comes with challenges and ethical considerations. Issues such as data privacy, algorithm bias, and the need for regulatory frameworks must be addressed to ensure responsible and equitable AI deployment. Striking a balance between innovation and ethical considerations is crucial for building trust in AI-driven healthcare solutions.

Results and Discussion:

Predictive Analytics in Disease Prevention and Early Diagnosis:

Result: AI-driven predictive analytics have proven effective in identifying patterns and risk factors, enabling the prediction of diseases such as diabetes, cardiovascular conditions, and certain cancers.

Discussion: The use of predictive analytics enhances disease prevention and early diagnosis, allowing healthcare professionals to intervene proactively. Early detection not only improves patient outcomes but also contributes to the cost-effectiveness of healthcare by reducing the need for extensive and costly interventions.

Personalized Treatment Plans with Machine Learning:

Result: AI-driven machine learning models provide personalized and targeted treatment plans by considering individual patient data, including genetics, medical history, and lifestyle factors.

Discussion: The application of machine learning in treatment planning marks a paradigm shift towards personalized medicine. Tailored treatment options based on individual characteristics improve treatment efficacy, minimize adverse effects, and increase patient adherence, ultimately leading to better overall healthcare outcomes.

Enhancing Diagnostic Accuracy with Imaging AI:

Result: AI algorithms in medical imaging enhance diagnostic accuracy by analyzing X-rays, MRIs, and CT scans to detect anomalies and provide rapid, accurate diagnoses.

Discussion: The integration of AI in medical imaging significantly improves the efficiency of diagnosis. Rapid and accurate assessments enable healthcare professionals to make timely decisions, leading to enhanced patient care and improved overall diagnostic accuracy.

Streamlining Workflows with Decision Support Systems:

Result: Decision support systems powered by AI streamline healthcare workflows by providing real-time insights and recommendations to healthcare professionals based on patient data and clinical guidelines.

Discussion: The implementation of decision support systems in healthcare enhances the decision-making process. Real-time insights contribute to evidence-based decision-making, supporting healthcare providers in delivering high-quality care with improved efficiency.

Remote Patient Monitoring and Proactive Healthcare:

Result: AI facilitates remote patient monitoring, allowing for real-time tracking of vital signs and health metrics to identify potential health issues before they escalate.

Discussion: The use of AI in remote patient monitoring transforms healthcare from reactive to proactive. Early identification of potential health issues enables timely interventions, improving patient safety, reducing hospital readmissions, and ultimately contributing to a more cost-effective healthcare system.

Challenges and Ethical Considerations:

Result: The integration of AI in healthcare brings challenges such as data privacy, algorithm bias, and the need for regulatory frameworks.

Discussion: Ethical considerations are paramount in the deployment of AI in healthcare. Addressing issues like data privacy and algorithmic bias is essential to build trust and ensure responsible and equitable use of AI-driven solutions. Regulatory frameworks must be established to guide the ethical deployment of AI in healthcare settings.

Conclusion:

AI is undeniably transforming patient care through predictive analytics and decision support systems. From early disease detection to personalized treatment plans and streamlined workflows, AI is revolutionizing healthcare delivery. As the field continues to evolve, addressing challenges and ethical considerations will be essential to harness the full potential of AI in improving patient outcomes, enhancing the efficiency of healthcare systems, and shaping the future of healthcare delivery.

References

- [1]. Hasan, M. R., Ray, R. K., & Chowdhury, F. R. (2024). Employee Performance Prediction: An Integrated Approach of Business Analytics and Machine Learning. *Journal of Business and Management Studies*, 6(1), 215-219. Doi: <https://doi.org/10.32996/jbms.2024.6.1.14>
- [2]. Ray, R. K., Chowdhury, F. R., & Hasan, M. R. (2024). Blockchain Applications in Retail Cybersecurity: Enhancing Supply Chain Integrity, Secure Transactions, and Data Protection. *Journal of Business and Management Studies*, 6(1), 206-214. Doi: <https://doi.org/10.32996/jbms.2024.6.1.13>

- [3].Vemuri, N. V. N. (2023). Enhancing Human-Robot Collaboration in Industry 4.0 with AI-driven HRI.Power System Technology,47(4), 341-358.Doi: <https://doi.org/10.52783/pst.196>
- [4].Vemuri, N., Thaneeru, N., & Tatikonda, V. M. (2023). Smart Farming Revolution: Harnessing IoT for Enhanced Agricultural Yield and Sustainability.Journal of Knowledge Learning and Science Technology ISSN: 2959-6386 (online),2(2), 143-148.DOI:<https://doi.org/10.60087/jklst.vol2.n2.p148>
- [5].Vemuri, N., Thaneeru, N., & Tatikonda, V. M. (2023). Securing Trust: Ethical Considerations in AI for Cybersecurity . Journal of Knowledge Learning and Science Technology ISSN: 2959-6386 (online), 2(2), 167-175. <https://doi.org/10.60087/jklst.vol2.n2.p175>
- [6].Vemuri, N., Thaneeru, N., & Tatikonda, V. M. (2024). AI-Optimized DevOps for Streamlined Cloud CI/CD.International Journal of Innovative Science and Research Technology,9(7), 10-5281.
- [7].Tatikonda, V. M., Thaneeru, N., & Vemuri, N. (2022). Blockchain-Enabled Secure Data Sharing for Ai-Driven Telehealth Service.Asian Journal of Multidisciplinary Research & Review,3(1), 305-319.<https://doi.org/10.17613/80t9-fy17>